





WINTER

Spring

SUMMER

FALL



WINTER

Spring

SUMMER

FALL

Seasonal Art Sort Game

Directions

1. Print out pages 1 and 2.
2. Cut out paintings and season cards.
3. Have students look at each landscape painting for carefully for clues about what season the painting might be in. Then ask students to match the painting with the season card they think it is.
4. Once students have matched all their paintings and season cards they can tell another person what they saw in the painting that made them think it was that season.
5. Finally students can check their answers with the answer/painting information page.

Seasonal Art Sort Game

Answer Sheet



#1 Winter
Edward Willis Redfield (painter)
The Road to Center Bridge
c. 1922
oil on canvas
Corcoran Collection (Gift of Lady Inchyra)
2015.19.92
Not on View



#2 Fall
Thomas Cole
A View of the Mountain Pass Called the Notch of the White Mountains (Crawford Notch)
1839
oil on canvas
Andrew W. Mellon Fund
1967.8.1
On View : West Building, Main Floor - Gallery 64

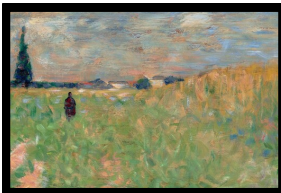
- [add to compare images list](#)



#3 Fall
Narcisse Virgile Diaz de la Peña
Narcisse Diaz de la Peña (painter)
The Frog Pond
1876
oil on wood
Corcoran Collection (William A. Clark Collection)
2015.19.27
Not on View



#4 Summer
Vincent van Gogh (painter)
Farmhouse in Provence
1888
oil on canvas
Ailsa Mellon Bruce Collection
1970.17.34
On View : West Building, Main Floor - Gallery 83



#5 Summer
Georges Seurat
A Summer Landscape
1883
oil on wood
Collection of Mr. and Mrs. Paul Mellon
2014.18.52
On View : West Building, Main Floor - Gallery 88



#6 Winter
John Marin (painter)
Winter Landscape
c. 1900
oil on canvas
Gift of John Marin, Jr.
1986.54.1
Not on View



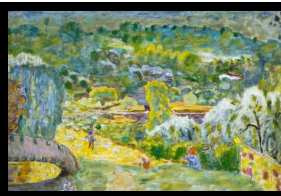
#13 Winter
Edward Daves
The Head of Ullswater
1790s
watercolor over graphite on wove paper
Ailsa Mellon Bruce Fund
1997.84.1
Not on View



#7 Fall
Jasper Francis Cropsey
Autumn - On the Hudson River
1860
oil on canvas
Gift of the Avalon Foundation
1963.9.1
On View : West Building, Main Floor - Gallery 64



#8 Summer
Albert Bierstadt
Lake Lucerne
1858
oil on canvas
Gift of Richard M. Scaife and Margaret R. Battle, in Honor of the 50th Anniversary of the National Gallery of Art
1990.50.1
On View : West Building, Main Floor - Gallery 64
8



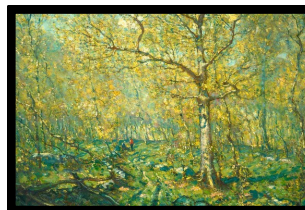
#9 Spring
Pierre Bonnard
A Spring Landscape
c. 1935
oil on canvas
Ailsa Mellon Bruce Collection
1970.17.10
On View : East Building, Ground Level - Gallery 103E



#10 Fall
Meindert Hobbema (painter)
Wooded Landscape with Figures
c. 1658
oil on panel
Corcoran Collection (William A. Clark Collection)
2015.143.13
Online Edition
Not on View



#11 Spring
Camille Pissarro
Orchard in Bloom, Louveciennes
1872
oil on canvas
Ailsa Mellon Bruce Collection
1970.17.51
On View : West Building, Main Floor - Gallery 87



#12 Spring
Henry Ward Ranger
Spring Woods
c. 1910
oil on canvas
Chester Dale Collection
1963.10.202
Not on View